

CEPSA SUPERMULTIGRADO SHPD 15W40

Description



Oil for high-performance heavy-duty diesel engines with MILD EXTENDED DRAIN rating. For light and heavy duty EURO III and earlier diesel engines, in severe service conditions, that require oils with good soot control.

Applications

- All types of industrial vehicle with latest-generation engines, which require API CH-4.
- Specially for powerful earth-moving, construction and mining machinery operating in severe conditions and running on current low-sulphur diesel fuels.
- Suitable for vehicles subject to emission control (EURO III).
- For vehicles in city traffic with restrictions on exhaust emissions and their associated pollutants.
- In light vehicles providing urban services with frequent starts and stops.

Performance

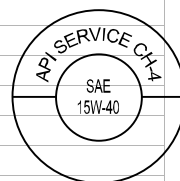
- Its balanced formulation allows it to be used in both European and American vehicle engines requiring oils with a low ash content.
- Great crankcase soot control in EURO III and EPA (American) engines, preventing excessive oil thickening, filter blockage and wear in the valve train.
- High anti properties foam in designs using oil as hydraulic fluid to work the diesel injection system.
- Excellent cost-effective. Suitable for urban transport services and construction machinery, with normal oil change intervals.

Specifications

• ACEA E2	• MAN 271	• VOLVO VDS	• API CH-4
• MB-Approval 228.1	• MTU Type 1 (Level)	• CAT TO-2 (Level)	• MACK EO-M
• ZF TE-ML 04C/07C	• ALLISON C4 (Level)	• CATERPILLAR ECF-1	• CUMMINS CES 20071/20076

Typical Characteristics

CHARACTERISTICS	ASTM STANDARD	CEPSA SUPERMULTIGRADO SHPD 15W-40
SAE grade	---	15W-40
Density 15°C, g/cc	D-4052	0.888
Flash Point (COC) °C	D-92	>210
Pour Point, °C	D-97	-27
Viscosity at 100°C, cSt	D-445	14.45
Viscosity at 40°C, cSt	D-445	108
Viscosity Index	D-2270	136
Apparent Viscosity CCS -20°C	D-5293	<7000
Base Number. mg KOH/g	D-2896	9.2



Health & Safety and Environment

Health, safety and environmental information is provided for this product in the Materials Safety Data Sheet. This gives details of potential hazards, precautions and First Aid measures together with environmental effects and disposal of used products.

The typical values of the characteristics appearing in the table are average values given for guidance purposes. These values may be modified without any prior warning.