



PRODUCT DATA SHEET



BAKERYLUBE FOOD GRADE OVEN CHAIN LUBRICANT HEAVY

Bakerylube Food Grade Oven Chain Lubricant Heavy, commonly known as Bel-Ray No-Tox Bakerylube Heavy, is a high temperature oven food grade chain lubricant designed to deliver and deposit the advanced food grade solid lubricant “Graffight,” leaving no sludge or carbon residue. Solids lubricate up to 900°C (1652°F). See product data sheet for grades, temperature ranges and application instructions.

Applications

- ◆ Chains, conveyors, bearings found in high temperature ovens

Features and Benefits

- | | |
|--|---|
| ◆ NSF H1 registered | Use where incidental food contact may occur. |
| ◆ Bacteriological protection | Effectively inhibits the growth of certain bacteria, yeast and mold in the lubricant. |
| ◆ Contains food grade solid lubricants | Superior wear protection. |
| ◆ Selected carrying fluids | Does not leave sludge or carbon residue when thermally decomposed. |

General Description

Bakerylube Food Grade Oven Chain Lubricant Heavy is designed to deliver and deposit the advanced food grade solid lubricants to the chain and bearing surfaces, dissipate the fluid carrier in a controlled manner and smoke as little as possible, while leaving a minimum or no carbon residue.

Bakerylube Food Grade Oven Chain Lubricant Heavy is an excellent fluid lubricant for lubrication under hydrodynamic conditions at temperatures up to 232°C (450°F). After prolonged exposure to temperatures above 232°C (450°F), the base fluids of **Bakerylube Food Grade Oven Chain Lubricant Heavy** volatilize, leaving the solid lubricant without sludge or carbon residue. The solid lubricant effectively lubricates up to 900°C (1652°F) in exposed areas. ***Bakerylube Food Grade Oven Chain Lubricant Heavy contains solid lubricants. It must be agitated prior to application.***

Bakerylube Food Grade Oven Chain Lubricant Heavy, formulated with the highest quality ingredients, meets NSF H1 and FDA requirements for materials that may have incidental contact with food as defined under Title 21 CFR, 178.3570. It is Kosher and Pareve approved, as well as Halal certified.

Product No. 62057

Page 1 of 3

With continual research and development, Bel-Ray Company reserves the right to change the information contained herein. The Company is not responsible for misuse or misapplication of its products.

2/27/2015

BAKERYLUBE FOOD GRADE OVEN CHAIN LUBRICANT HEAVY

TYPICAL PROPERTIES

<u>Product No.</u>	<u>62057</u>
Viscosity (Base Fluid), ASTM D445	
@ 40°C, cSt	460
@ 100°C, cSt	89.8
Viscosity Index(Base Fluid), ASTM D2270	271
Base Fluid Type	Synthetic Fluid
Lubricating Solids Type	“Graffight”
Rust Test, ASTM D665, Procedure A & B	Pass
Falex EP Test, ASTM D3233 Method B	
Non-seizure Load, lbf	1500
Flash Point, ASTM D93	
°C (°F)	117 (350)
Flash Point, ASTM D92	
°C (°F)	232 (450)
Application Temperature Range	
°C	121 to 232
(°F)	(250 to 450)
Useful Temperature Range	
Fluid, °C	-40 to 232
Fluid, (°F)	(-40 to 450)
Dry Film, °C	204 to 900
Dry Film, (°F)	(450 to 1652)
Appearance	Milky White

GENERAL INSTRUCTIONS FOR USING BAKERYLUBE FOOD GRADE OVEN CHAIN LUBRICANT HEAVY

Bakerylube Food Grade Oven Chain Lubricant Heavy is a mixture of food grade synthetic fluid carriers and advanced food grade solid lubricants for use in ovens that are difficult to cool, or where the chain must be lubricated before there is sufficient time for cooling. It must be stirred to disperse the solid lubricants uniformly in the fluid before application. **Bakerylube Food Grade Oven Chain Lubricant Heavy** is a highly efficient lubricant.

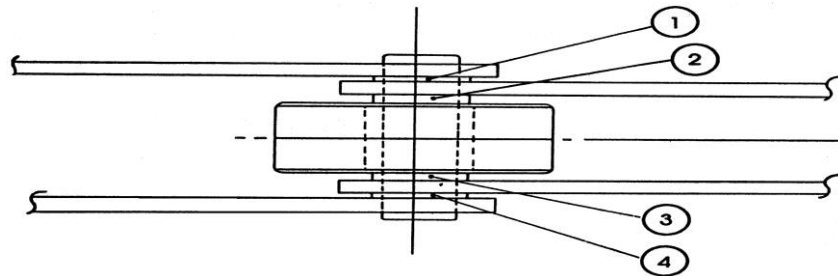
Weekly re-lubrication is usually sufficient. If more frequent lubrication is required to prevent chains from squeaking, discuss your application with your Bel-Ray representative. **Bakerylube Food Grade Oven Chain Lubricant Heavy** – Application temperature should be 121 to 232°C (250 to 450°F).

BEFORE APPLYING:

1. Use as received, do not dilute.
2. Mix thoroughly before applying and continue to agitate, at least intermittently.
3. Keep container tightly sealed at all times when not in use to prevent contamination.
4. Apply by brush, swab, electric or air pump.

WHERE TO LUBRICATE:

1-2-3-4 = POINTS TO BE LUBRICATED



ADDITIONAL INFORMATION:

Mix thoroughly – the lubricant must be totally suspended before applying.

Clean the chain periodically by pinging and wire brushing (rule of thumb 4 times annually). A clean chain and free-turning rollers assure that the solids in the lubricant can migrate and leave a fine film on all the moving parts. To gauge the proper temperature for application of the lubricants, use a temperature gun to measure the actual temperature of the chain. Don't refer to the printout of the oven zone temperatures. Establish appropriate chain speed and always lubricate while running at that speed.

Documentation and record keeping is essential to monitor proper application and to help establish best lube schedule and parameters to prolong the life of an oven chain.